

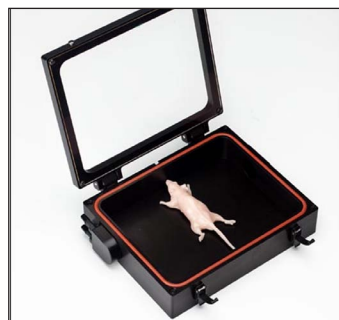
IVIS | Spectrum and 200



***Multi Modality
3D Co-Registration
Transfer Kit**



XGI-8 Anesthesia System
Part Number 118918



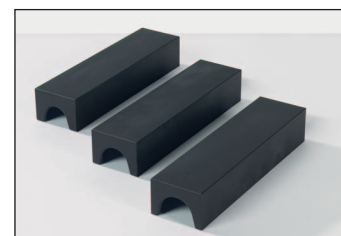
**XIC-3 Animal Isolation
Chamber Kit**
Part Number 123997



**XAM-2 Rat
Anesthesia Manifold**
Part Number 118934



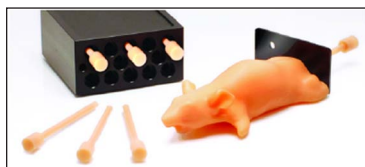
XWS-260 Workbench
Part Number 119207



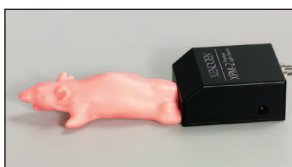
XAS-3 Animal Shield Kit
Part Number 119002

*Please contact your local representative for vendor compatibility

Calibration Accessories



**Phantom Mouse for
Fluorescent Imaging**
Part Number 121365 XFM-2



**Phantom Mouse for
Bioluminescent Imaging**
Part Number 118993 XPM-2



**XRH-2 Reflective
Hemisphere**
Part Number 118937



**XLS-4 Calibrated
Light Source**
Part Number 118897

Living Image 4.0

Living Image software is an advanced tool designed specifically for the IVIS Imaging system platform and contains features to help speed image acquisition and analysis. The software's new design creates an intuitive, seamless workflow for researchers of all skill levels. New features include: wizard based guidance for advanced imaging protocols, improved surface topography, advanced spectral unmixing tools, new color templates and 3D visualization tools.

Part Number	Software Package
126236	1 seat add-on to current Living Image 4.0 users
126237	5 seat add-on to current Living Image 4.0 users
126238	10 seat add-on to current Living Image 4.0 users
126760	25 seat add-on to current Living Image 4.0 users
126761	100 seat add-on to current Living Image 4.0 users
126243	Living Image 4.0 upgrade from Living Image 3.X (Upgrade consists of a system copy and 4 additional seats)
126244	Living Image 4.0 upgrade from Living Image 3.X (Upgrade consists of a single seat)
126245	Living Image 4.0 upgrade from Living Image 3.X (Upgrade consists of 5 additional seats)
126246	Living Image 4.0 upgrade from Living Image 3.X (Upgrade consists of 10 additional seats)
126252	Living Image 4.0 upgrade from Living Image 2.X (Upgrade consists of a system copy and 4 additional seats)
126253	Living Image 4.0 upgrade from Living Image 2.X (Upgrade consists of a single seat)
126254	Living Image 4.0 upgrade from Living Image 2.X (Upgrade consists of 5 additional seats)
126255	Living Image 4.0 upgrade from Living Image 2.X (Upgrade consists of 10 additional seats)